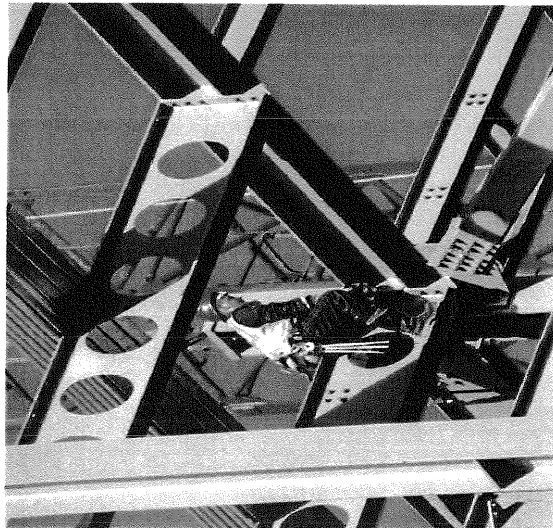


## THE COMMUNITY INCLUSION POLICY

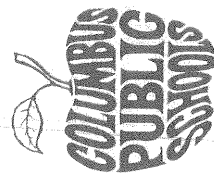
The Community Inclusion Policy, as adopted by the Columbus Board of Education, is intended to encourage diversity and inclusion in district contracting and procurement by ensuring the fair and equitable participation of local businesses owned by socially and economically disadvantaged individuals including African Americans, Hispanic Americans, Native Americans, women and others.

This nondiscriminatory *Local and Economically Disadvantaged Enterprise* (LEDE) provision applies to all district contracting and procurement opportunities.



## LOCAL ECONOMICALLY DISADVANTAGED BUSINESS ENTERPRISES

Columbus Public Schools  
Outreach Coordinator  
270 East State Street  
Columbus, Ohio 43215



Columbus Public Schools  
Outreach Coordinator  
270 East State Street  
Columbus, Ohio 43215  
(614) 365-8732  
(614) 365-6456 Fax

## WHAT DEFINES A LOCAL ECONOMICALLY DISADVANTAGED ENTERPRISE?

LEDE is an acronym for: Local Economic Disadvantaged Enterprise.

- ◆ "Local" means principal place of business is within Franklin County or more than 50% of its full-time employees reside within the boundaries of the school district.
- ◆ "Economically Disadvantaged" means, with respect to enterprise, is at least 51% owned and controlled by one or more individuals, each with a personal net worth equal to or less than \$750,000.
- ◆ "Enterprise" means, with respect to a sole proprietorship, partnership, company, corporation or joint venture, that has been in business for at least one year and meets the sized limitations outlined in the Federal Small Business Administration Regulations set forth in 13 C.F.R. 121.201.

*The Board of Education seeks to achieve the goal of awarding at least 20% of all district contract and procurement dollars annually to LEDE's.*

## WHAT IS THE INTENT OF THE COMMUNITY INCLUSION PROGRAM?



The Columbus Board of Education recognizes that a number of local businesses that support the school district have a competitive disadvantage with respect to contracting and procurement due to their size, economic and/or social status. The district seeks to ensure the fair and equitable participation of these local businesses. Accordingly, LEDE's are encouraged to participate directly as bidders with respect to district contracts and procurements.

*Prime contractors are required to use good faith efforts to locate and engage LEDE sub-contractors and suppliers.*

## Columbus Public Schools

Actively Seeks Participation  
By The Local Small Business  
Community

## WHAT ARE SOME ADVANTAGES OF REGISTERING WITH THE LEDE PROGRAM?

Registered LEDE's are included on the district's vendor database, which is used by departments seeking various goods and services. It also serves as a resource tool for external prime and subcontractors to locate LEDE's to meet program goals. Additional benefits include expanded networking opportunities, as well as, direct access to bid opportunities, outreach workshops, and vendor fairs as they occur.

## HOW CAN I FIND OUT MORE INFORMATION?

Business owners interested in participating or determining if they meet the criteria for LEDE certification can request a copy of the policy or download from the district's website at [www.columbus.k12.oh.us](http://www.columbus.k12.oh.us).

Potential participants can also pick up a vendor application and affidavit for LEDE certification at the CPS Community Inclusion Office at 270 E. State Street or the CPS Purchasing Department at 737 E. Hudson Street.