

**ADDENDUM NO. 3**

**OHIO UNIVERSITY**

**SOLAR COMPOST EXPANSION  
2011**

**ISSUE DATE: December 27, 2011**

The following Addendum items modify the requirements of the Proposal Documents for this project. The articles contained in Addendum No. 3 take precedence over the requirements of the previously published Proposal Documents.

The receipt of this Addendum must be acknowledged on the appropriate location (Section 004100, page 1) on the Bid Form. Failure of the Bidder to acknowledge receipt of this Addendum on the Bid Form will cause the Bid to be declared invalid.

**REVISIONS TO THE CONTRACT DOCUMENTS**

**PRE-BID MEETING MINUTES**

The meeting minutes from the pre-bid meeting are attached.

**PROJECT MANUAL**

*The following revisions were made to the project manual.*

Section 01 10 00 - Summary: the following paragraphs are hereby added to section 1.9:

- B. The General Contractor will make the area south of the new building available to the Photovoltaic Panel contractor within 30 days of the Notice to Proceed. This will allow the Photovoltaic Panel contractor to install foundations and wiring for the photovoltaic system.
- C. The General Contractor will make the new building available to the Photovoltaic Panel and Solar Thermal Water Heating contractors within 45 days of the Notice to Proceed for the installation of the PV and Solar Thermal Water Heating systems.

**CONTRACT DRAWINGS**

The following contract drawings shall be replaced with the attached drawings: A101, A102, A201, A202 and A301.

**END OF ADDENDUM NO. 3**

**ADDENDUM NO. 3**

**OHIO UNIVERSITY**

**SOLAR COMPOST EXPANSION  
2011**

**ISSUE DATE: December 27, 2011**

I acknowledge receipt of Addendum No. 3:

---

PRINTED NAME

---

SIGNATURE

---

COMPANY

---

DATE

**Return Fax: 614-224-2583**

**Attention: Ohio University Solar Compost Expansion 2011**

Atlas Blueprint And Supply / ARC

374 Spring Street

Columbus, Ohio

**Phone:** 614-224-5149

**PRE-BID CONFERENCE MINUTES**

**OHIO UNIVERSITY  
SOLAR COMPOST EXPANSION 2011**

**DECEMBER 22, 2011  
160 WEST UNION STREET  
ATHENS, OHIO**

1. Distribution of agendas and sign-in sheets.
2. Introduction of University and Design Professional Representatives.
  - a. See attached sign in sheet for list of meeting attendees.
3. Opening Comments, Ohio University
4. Proposal Submittal shall be directed

To: *Ohio University*  
*Procurement Services*  
*205 West Union Street Office Center*  
*160 West Union Street*  
*Athens, Ohio 45701*

Due Date & Time: *Wednesday, January 4, 2012 until  
11:00 am local time.*

5. Project Documents – available through Atlas Blueprint & Supply (ARC)  
Project Manual *Procurement and Contracting Documents  
and Specifications*  
*Project Construction Plans*
6. Bid Security – must be submitted with bid per the Instructions to Bidders.
7. Equal Business Opportunity & Prevailing Wage Rates – see attached document distributed by the University at the meeting.
8. Submittal Requirements – see the attached document from the University and the Instructions to bidders.

9. Project Funding – portions of the project are being funded through ARRA grants. Please refer to sections 00 73 43 and 00 73 73 of the specifications for specific requirements that the project will be required to comply with due to the grant funding.
10. Scope of Work
  - a. Building – post frame building will be constructed to house the composting unit, photovoltaic equipment and solar thermal water heating system.
  - b. Site Work – earthwork for compost curing area and stormwater management, limited drainage piping and utilities, concrete pavement and aggregate pavement.
  - c. Alternates – see section 01 23 00 for details.
    - i. Alternate No. G-1 – dock lift for unloading containers at the site.
    - ii. Alternate No. G-2 – extended roof to provide covered equipment storage area.
    - iii. Alternate No. G-3 – pre-engineered pole building. This alternate was added with Addendum #2. The permits for the site will be based on the building shown on the plans. The Contractor may submit an alternate for a pre-engineered building. However, no time extension will be given for a pre-engineered structure, and the Contractor will be responsible for any additional permitting efforts required for the pre-engineered building.
  - d. Coordination with Compost Unit, Photovoltaic Panel and Solar Thermal Water Heating vendors – the Contractor will be required to coordinate the work with the vendors for the various components of the project.
11. Permits – plan approvals from the State for the building design shown on the plans will be obtained by DLZ as described in the General Conditions. Special Inspections will be performed by DLZ. See sections 2.9 and 2.10 of the General Conditions for more information.
12. Schedule
  - a. Bid Opening: January 4, 2012
  - b. Approximate Date for Notice to Proceed: March 14, 2012 – this date is estimated based on the time needed for the University to issue the Notice to Proceed.
  - c. Complete Grant Related Construction: May 15, 2012 – this date is fixed due to the Grant funding. No extensions will be granted. See Section 01 10 00 for more information.
  - d. Final Completion: June 15, 2012 – final completion shall occur 90 days from the Notice to Proceed.
13. Addenda
  - a. Addendum #1 – issued December 13, 2011.
  - b. Addendum #2 – issued December 21, 2011.

- c. Addendum #3 – will be issued next week and will include pre-bid meeting minutes.
14. Deadline for Questions: *Tuesday, December 27, 2011 at 5:00 p.m.*
15. Questions and Responses.
- a. Will extensions to the milestone dates be granted due to weather? The milestone date for the Grant related construction will not be extended.
  - b. Will the composting unit be installed by the manufacturer? The General Contractor will be responsible for the installation of the composting unit at the site and final utility connections to the unit including power and water. The General Contractor shall supply a crane and all equipment and labor necessary to transport the composting unit from its present location at the site to the final location shown on the plans. The composting unit manufacturer will be on-site during the installation of the unit and will make all internal connections for the composting unit.
  - c. Will the University move the existing compost at the site? The University will relocate the existing compost and wood chip stockpiles prior to construction. The Contractor will need to coordinate the location of the temporary stockpiles with the University and may need to phase the earthwork operations at the site to accommodate the compost and wood chip stockpiles. The existing facility will be in operation during the construction of the new facility.
  - d. Who will be responsible for the “cost in aid of construction” (CIAC) for the electric service to the new building? The University will pay all CIAC costs for the electric service to the new building.
  - e. Is there an estimated earthwork quantity for the project? The estimated quantities for the site improvements are shown on sheet C001. The estimated quantities are provided for reference only and shall be verified by the Contractor. The University will allow the Contractor to stockpile any excess material at the site. The Contractor shall obtain approval for any stockpile locations from the University and shall seed and mulch the stockpile areas.
16. Site Tour

## **Pre-bid meeting: Solar Composter Expansion 2011**

**Project #12-012JM**

**Pre-Bid Meeting date: 12/22/11**

From: Jane Palmer, Prevailing Wage Coordinator  
Ohio University, 213 HDL Center, Athens, OH 45701  
Phone 740-597-1567 Fax: 740-593-2144  
[palmerj@ohio.edu](mailto:palmerj@ohio.edu)

### **Contractor Checklist:**

1. Be sure your BWC Drugfree Safety Program (DFSP) is current. Go on-line to check (using the link at the bottom of the OU Construction website is the fastest way to get there).
2. All subs also need current BWC Drugfree Safety Program (DFSP). You will be required to fill out the DAS Subcontractor & Material Supplier Declaration form before the job begins. This form is found under "Forms" on DAS site, link from bottom of OU Construction page.
3. Be sure EEO Certificate of Compliance is current or in application process. Link at bottom of OU Construction website.
4. Must check for EDGE subs and suppliers to meet the 5% requirement. A waiver is required if less than 5%. The Waiver form is found at the DAS link, under "Forms/Documents": [EDGE Participation/Demonstration of Good Faith Effort](#). The Waiver would be granted ONLY if there is agreement from OU and the State of Ohio that there was no possibility of reaching the 5% goal.
5. INCLUDE ALL PAGES OF THE BID FORM. For markings on envelope follow Instructions to Bidders Section 2.6.1 and 3.1.2 for required information.
6. There is a link to the DAS pay application form to be used on the OU construction website. Must use the latest version that includes EDGE. Short form for smaller projects with no more than 4 page Schedule of Values. When creating your Schedule of Values, be sure that the EDGE part of the project has its own line.
7. This is a Federally funded project, therefore Davis-Bacon rates apply. Please go to US Department of Labor site for details: <http://www.dol.gov/compliance/guide/dbra.htm> You may use the state or federal certified payroll form.

### **Website Directions to OU Construction Webpage**

Go to the OU homepage [www.ohio.edu](http://www.ohio.edu) Scroll down

Click on "Administrative Offices" – Second from bottom on the list on the left

Click on "Finance and Administration" – Third from the bottom of the drop down list

Click on "Procurement Services" (on the left under "Finance")

Click on "Purchasing"

Click on "Construction" (lower right of your screen)

Helpful links at bottom include the EDGE look-up site, BWC Drug Free Workplace status, DMA form, etc.

NOTE: When printing the Pay Application, DO NOT HIT PRINT unless you choose how many pages. (Otherwise it will print about 140 pages.)

Ohio University Notice of Non-Discrimination and Affirmative Action:

Ohio University does not discriminate on the basis of race, color, religion, national origin, sex, disability, sexual orientation, gender identity or expression, age, or military veteran status in its employment practices or in the provision of educational programs and services. The following person has been designated to handle inquiries regarding the University's non-discrimination policies, to receive discrimination/harassment complaints from members of the university community, and to monitor the institution's compliance with state and federal non-discrimination laws and regulations:

Laura L. Myers, J.D., M.A.  
Interim Director, Office for Institutional Equity  
Office of the Executive Vice President and Provost  
Ohio University  
101 Crewson House  
Athens, OH 45701  
Voice: 740.593.2620  
Fax: 740.593.0790  
Title IX and ADA/504 Coordinator  
<http://www.ohio.edu/equity/>

Ohio University is an equal access/equal opportunity affirmative action institution, including equal opportunity for women and minorities; Special Disabled Veterans, Veterans of the Vietnam Era, Recently Separated Veterans, and Other Protected Veterans; and Workers with Disabilities (41 CFR 60-1, 60-250, and 60-741 are here-in included by reference). Notice to all subcontractors: If your company has more than 50 employees and \$50,000 in government contracts, you may be required to provide an affirmative action plan.



DOOR SCHEDULE (###)								
#	SIZE	DOOR			FRAME		HARDWARE	
		TYPE	CONST.	FINISH	GLASS	CONST.		JAMB/HEAD
101	3'-0"W x 7'-0"H	HALF-LITE	HM	PAINTED	INSULATED/TEMPERED	HM	2"/2"	1
102	8'-0"W x 8'-0"H	SECTIONAL	STEEL	PREFIN.	-	STEEL		4
103	4'-0"W x 8'-0"H	SECTIONAL	STEEL	PREFIN.	-	STEEL		4
104	3'-0"W x 7'-0"H	HALF-LITE	HM	PAINTED	INSULATED/TEMPERED	HM	2"/2"	1
105	4'-0"W x 8'-0"H	SECTIONAL	STEEL	PREFIN.	-	STEEL		4
106	3'-0"W x 7'-0"H	FLUSH	HM	PAINTED	-	HM	2"/2"	2
107	3'-0"W x 7'-0"H	FLUSH	HM	PAINTED	-	HM	2"/2"	3
108	10'-0"W x 10'-0"H	SECTIONAL	STEEL	PREFIN.	-	STEEL		4

WINDOW SCHEDULE (A)			
#	SIZE	OPER.	CONST.
A	4'-0"W x 4'-0"H	SINGLE-HUNG	ALUM.

WALL TYPE SCHEDULE (#)	
#	CONSTRUCTION
1	1 1/2" EXTERIOR STEEL PANELS, 1" INSULATION, 2x6 GIRTS @ 2'-0" O.C., LAMINATED 2x6 POSTS, 1" INTERIOR METAL LINER PANEL.
2	1 1/2" EXTERIOR STEEL PANELS, 1" INSULATION, 2x6 GIRTS @ 2'-0" O.C., VAPOR BARRIER, 2x6 STUDS @ 16" O.C. (IN LINE W/ POSTS), 5/2" BATT INSULATION, 5/8" GYPSUM BOARD.
3	5/8" GYPSUM BOARD EACH SIDE, 2x4 STUDS @ 16" O.C., 3/2" BATT INSULATION.
4	5/8" CEMENT BOARD (WET SIDE), 2x6 STUDS @ 16" O.C., 5/8" GYPSUM BOARD (DRY SIDE).
5	8x16x8 (NOMINAL) CMU, BULLNOSE CORNERS.
6	8x16x8 (NOMINAL) CMU (BULLNOSE CORNERS), 2x2 WOOD FURRING @ 16" O.C., 1 1/2" INSULATION, 5/8" GYPSUM BOARD (ROOM SIDE).

**HARDWARE:**

SET 1

3 BB HINGES W/NRP.	4.5x4.5		
1 STOREROOM LOCK	93K-7-D-14C	BEST	626
1 SURFACE CLOSER	4041	LCN	689
1 OH STOP			
1 SET SEALS	110 SA	NGP	
1 DRIP CAP	17	NGP	
1 THRESHOLD	896 S	NGP	
1 LOCK GUARD	LG 12	IVES	600

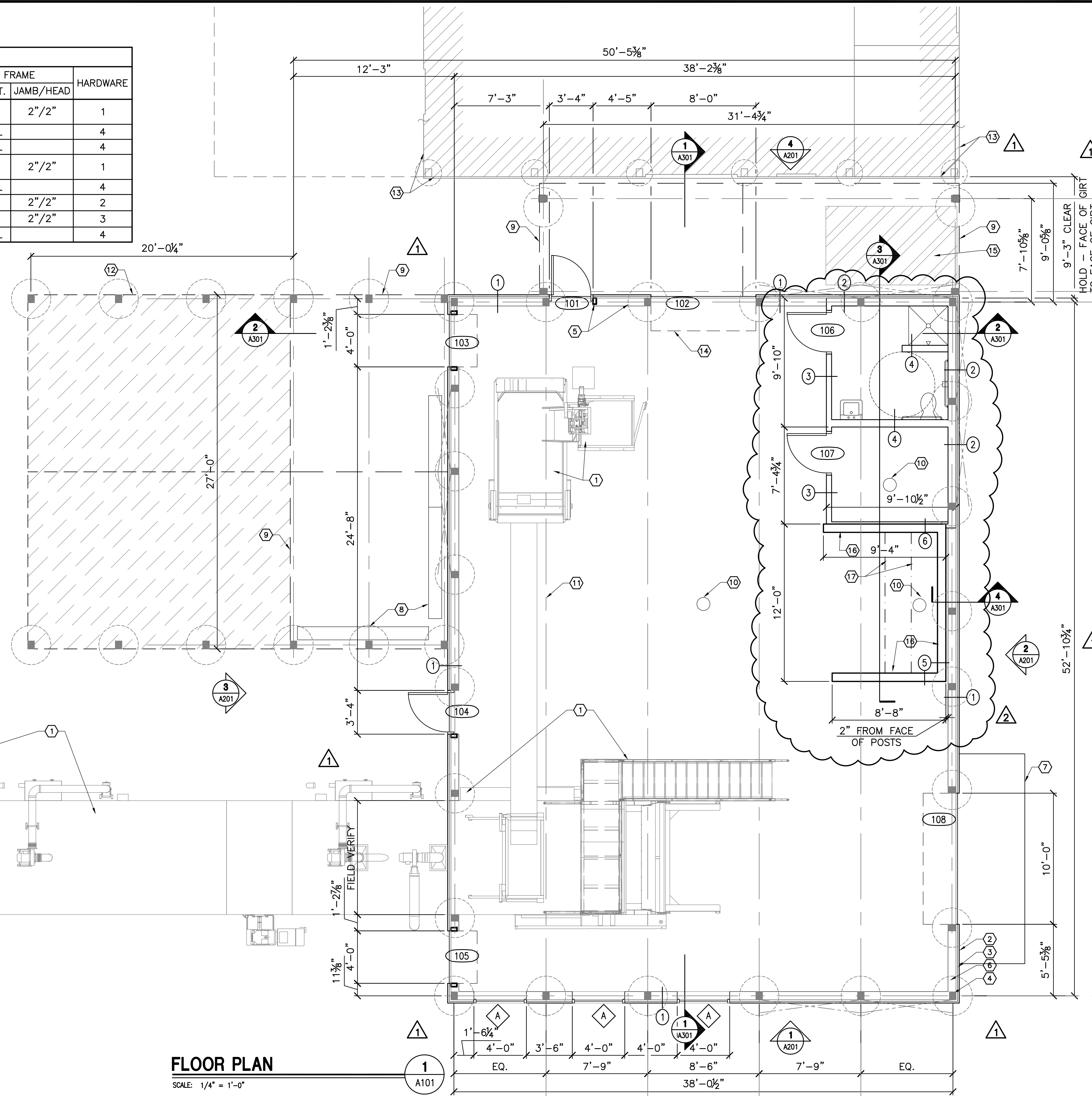
SET 2

3 BB HINGES	4.5x4.5		
1 PRIVACY LOCK	93K-0-L-14C	BEST	
1 COAT HOOK			
1 WALL STOP			

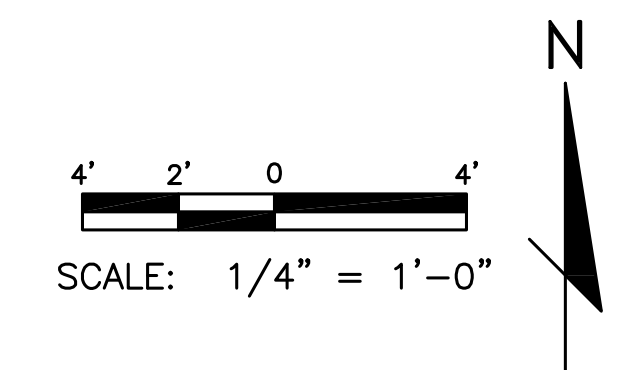
SET 3

3 BB HINGES	4.5x4.5		
1 STOREROOM LOCK	93K-7-D-14C	BEST	

SET 4  
SEE SPECS



**FLOOR PLAN**  
SCALE: 1/4" = 1'-0"



- GENERAL NOTES:**
- CONTRACTOR TO PROVIDE & INSTALL "KNOX BOX". COORDINATE W/OWNER & FIRE DEPARTMENT FOR MODEL # AND PLACEMENT.
  - CONTRACTOR TO PROVIDE & INSTALL (2) SIGNS: "WARNING: ROOF ACCESS PROHIBITED, AUTHORIZED PERSONNEL ONLY." SIGNS TO BE ALUMINUM WITH SURFACE-APPLIED VINYL LETTERS W/MFR. STANDARD BAKED-ON CLEAR COATING. COORDINATE W/OWNER REGARDING SIZE, COLOR, FONT, MOUNTING & LOCATIONS.

- CODED NOTES:**
- COMPOSTER EQUIPMENT.
  - EXTERIOR METAL PANEL, TYPICAL.
  - GIRT, TYPICAL.
  - POST, TYPICAL.
  - FRAMING, TYPICAL.
  - INTERIOR METAL LINER PANEL TO 8'-0" A.F.F., TYPICAL.
  - CONCRETE APRON.
  - CONCRETE BARRIER, REFER TO CIVIL PLANS.
  - OVERHANG ABOVE.
  - FLOOR DRAIN. REFER TO PLUMBING.
  - ☉ OF TRUSS ABOVE, TYPICAL.
  - OUTLINE, ALTERNATE G2.
  - OUTLINE OF EXISTING FACILITY.
  - OUTLINE OF SECTIONAL DOOR TRACK ABOVE, TYPICAL.
  - 6'x10' 5000 LBS. CAPACITY SURFACE MOUNTED DOCK LIFT, ALTERNATE G1.
  - PROVIDE APPLICATION OF SILANE/SILOXANE PENETRATING SEALER TO ALL SURFACES OF CMU.
  - (2) 6" CHANNELS SPANNING CLEAR AS SUPPORT FOR CONTAINERS. EMBED ENDS IN CMU. COORDINATE FINAL PLACEMENT W/OWNER.



ATHENS OHIO

**OHIO UNIVERSITY  
SOLAR COMPOST EXPANSION 2011**

**ARCHITECTURAL  
FLOOR PLAN**

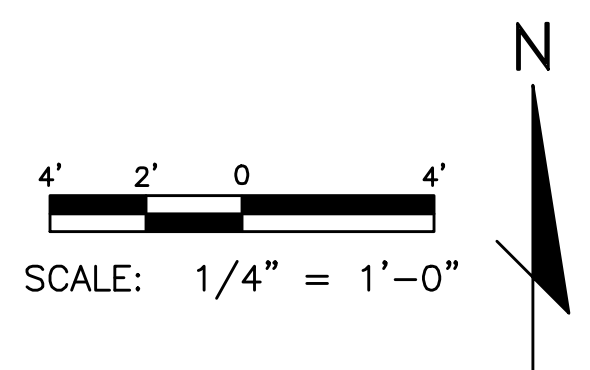
NO.	REVISION	BY	DATE
1	ADDENDUM 2	JAH	12/21/11
2	ADDENDUM 3	JAH	12/22/11

DESIGNED: HZS  
CHK'D: HZS  
APPR'D: KMB

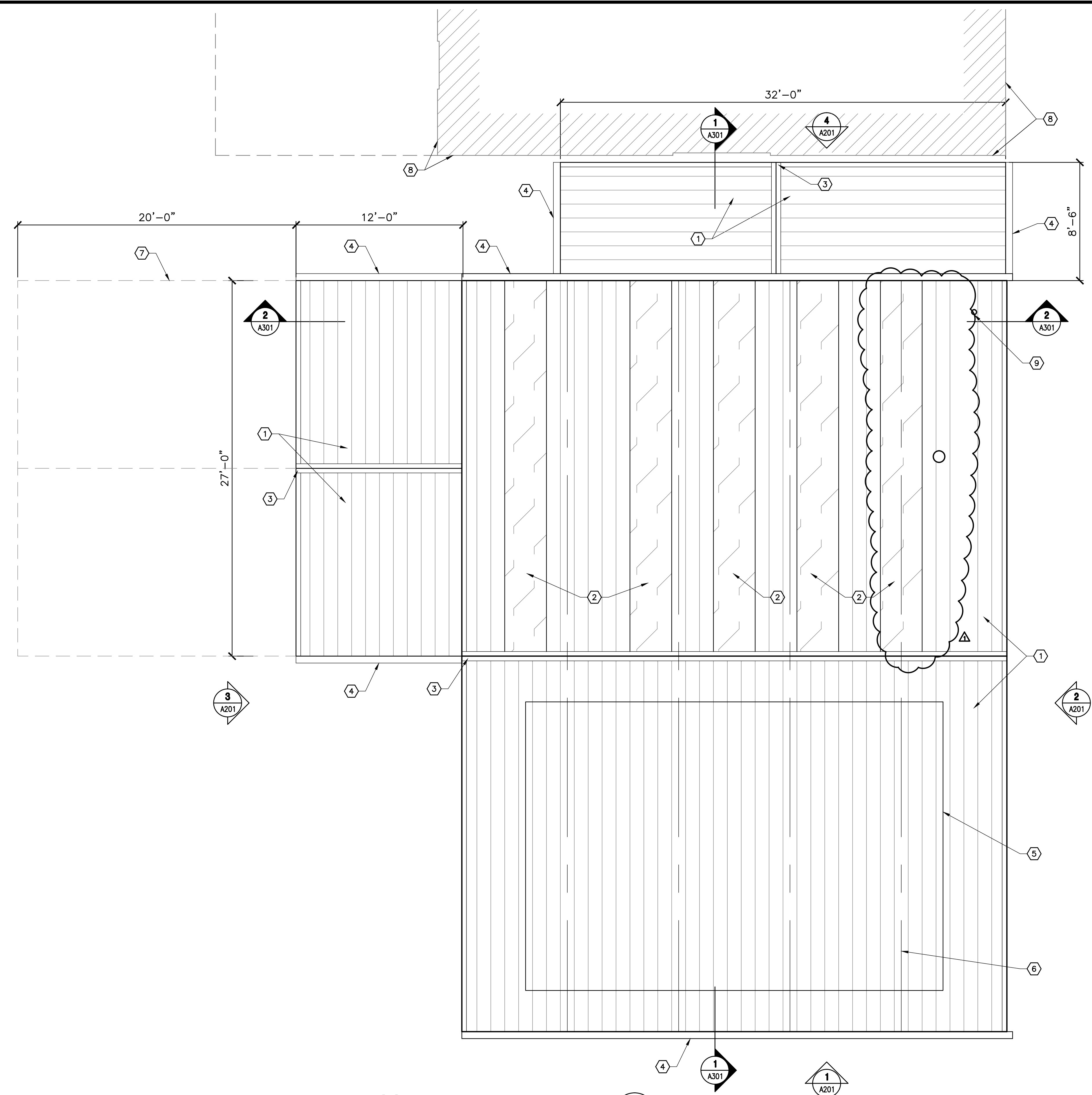
DATE: DEC 12, 2011  
SCALE: 1/4" = 1'-0"

PROJECT NUMBER  
**1121-6004.00**

SHEET **8**  
OF **24**  
DRAWING NUMBER  
**A101**



- CODED NOTES: (7)
1. METAL ROOF PANELS & TRIM.
  2. TRANSLUCENT ROOF PANELS.
  3. RIDGE CAP.
  4. GUTTER.
  5. SOLAR PANELS, BY OWNER.
  6. C OF TRUSS BELOW, TYPICAL.
  7. FUTURE EXPANSION OUTLINE, ALTERNATE G2.
  8. OUTLINE OF EXISTING FACILITY.
  9. PLUMBING VENT, TYP.



**ROOF PLAN**

SCALE: 1/4" = 1'-0"

1  
A102



ATHENS

OHIO UNIVERSITY  
SOLAR COMPOST EXPANSION 2011

OHIO

ARCHITECTURAL  
ROOF PLAN

DRAWN: LMB	CHK'D: HZS	NO.	REVISION	BY	DATE
DESIGNED: HZS	APPR'D: KMB	1	ADDENDUM 3	JAH	12/22/11
DATE: DEC 12, 2011					
SCALE: 1/4" = 1'-0"					
PROJECT NUMBER					
1121-6004.00					

SHEET 9

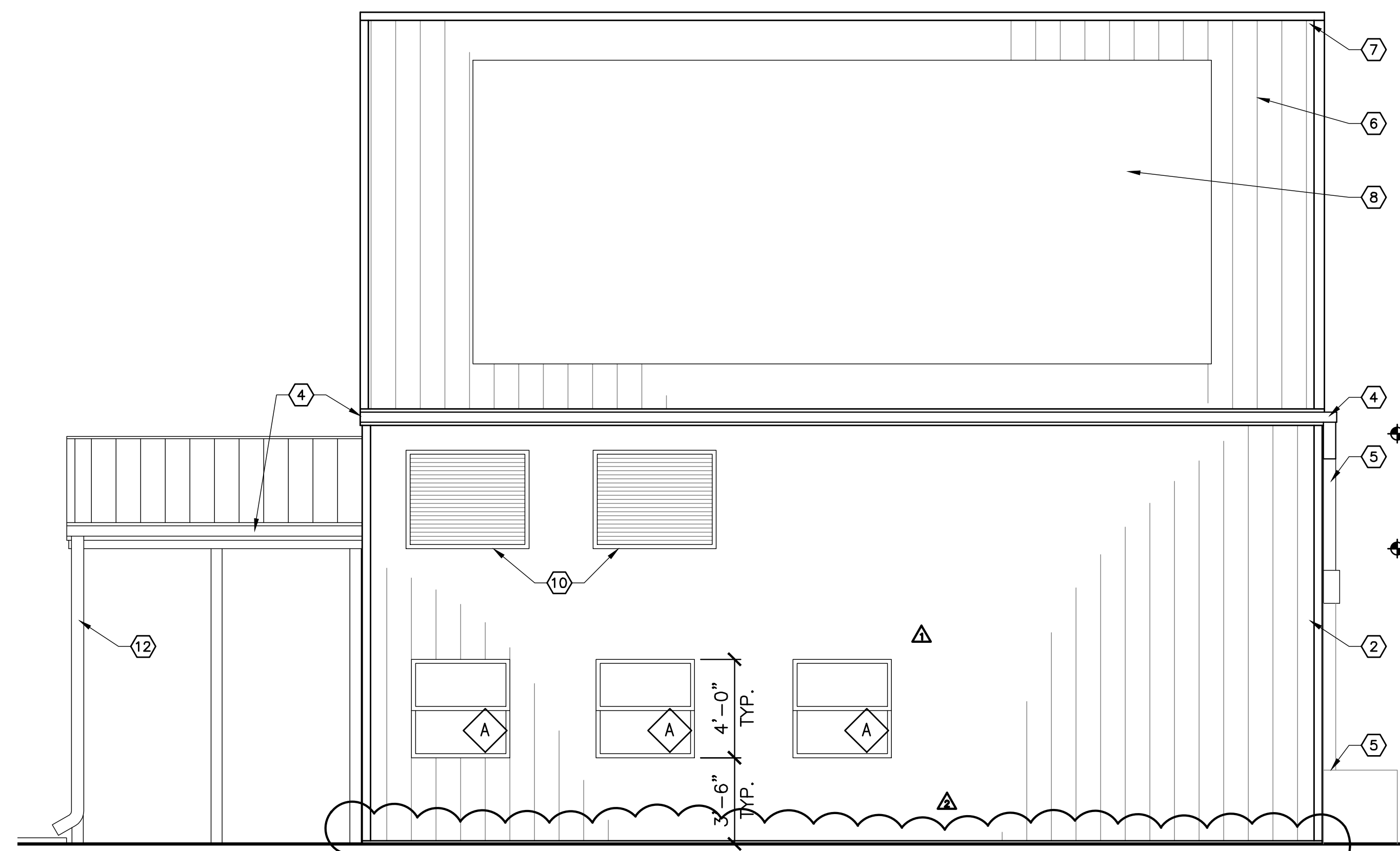
OF 24

DRAWING NUMBER

A102

DLZ OHIO, INC.

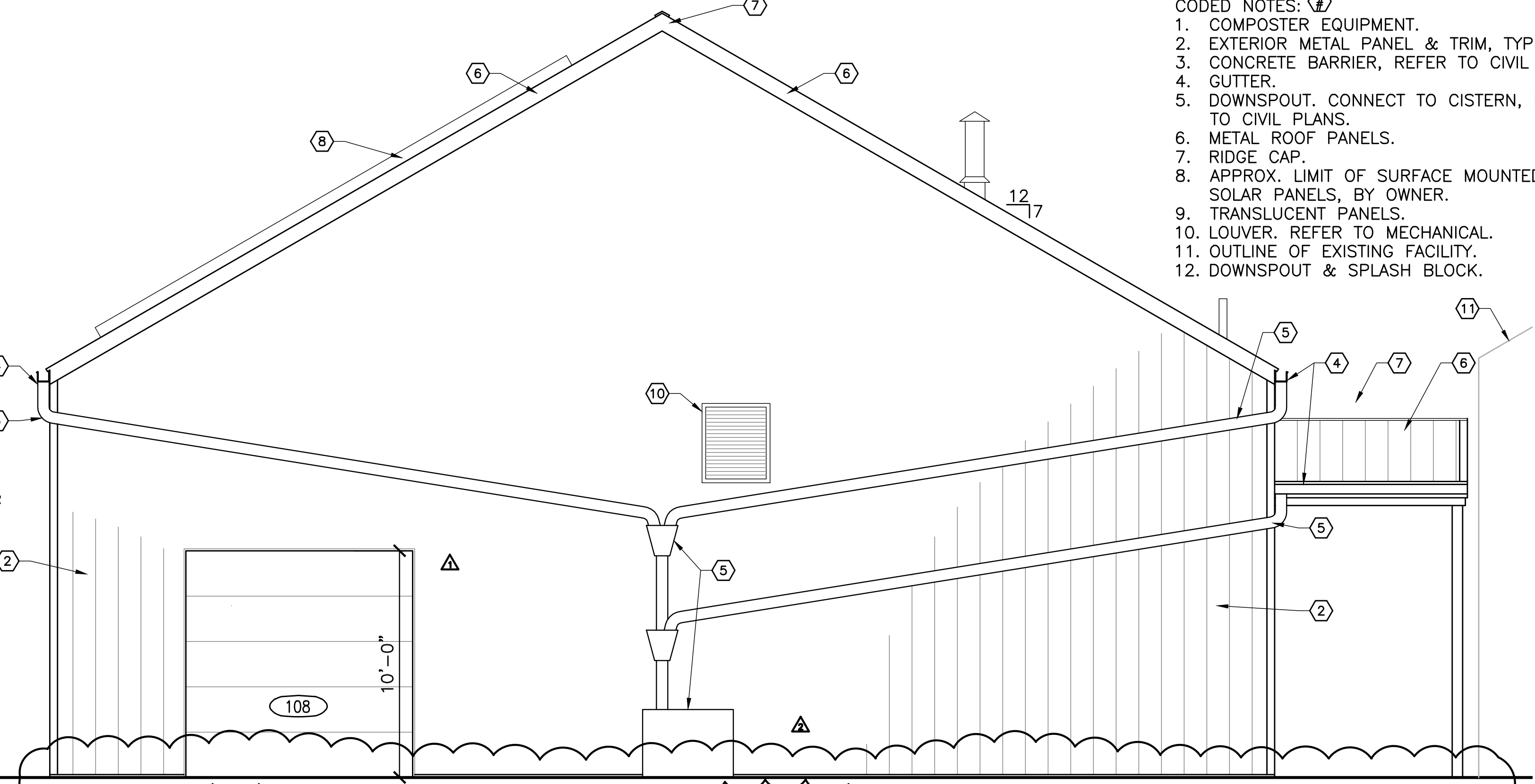
- CODED NOTES:**
1. COMPOSTER EQUIPMENT.
  2. EXTERIOR METAL PANEL & TRIM, TYPICAL.
  3. CONCRETE BARRIER, REFER TO CIVIL PLANS.
  4. GUTTER.
  5. DOWNSPOUT. CONNECT TO CISTERN, REFER TO CIVIL PLANS.
  6. METAL ROOF PANELS.
  7. RIDGE CAP.
  8. APPROX. LIMIT OF SURFACE MOUNTED SOLAR PANELS, BY OWNER.
  9. TRANSLUCENT PANELS.
  10. LOUVER. REFER TO MECHANICAL.
  11. OUTLINE OF EXISTING FACILITY.
  12. DOWNSPOUT & SPLASH BLOCK.



**SOUTH ELEVATION**

SCALE: 1/4" = 1'-0"

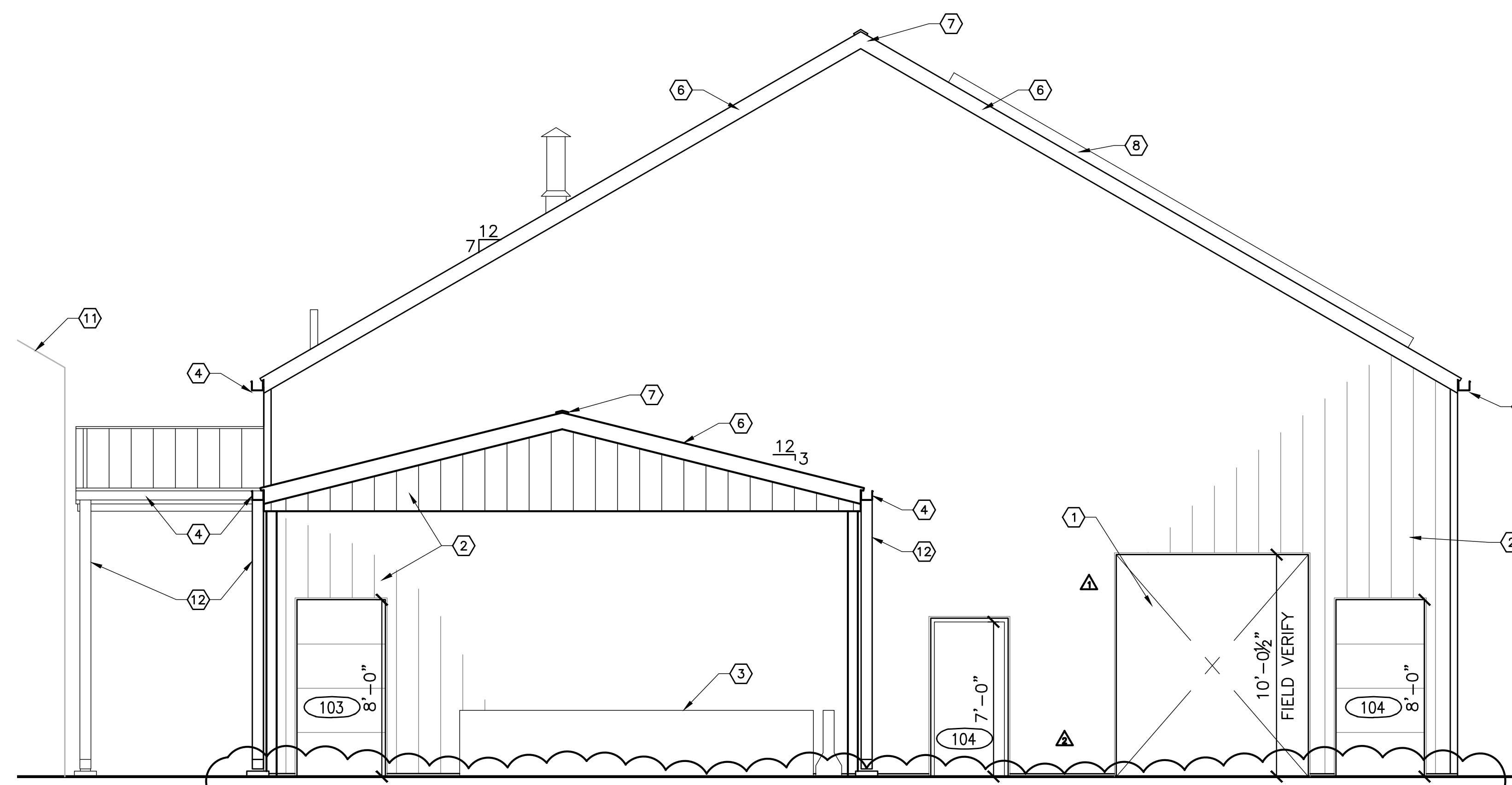
1  
A101



**EAST ELEVATION**

SCALE: 1/4" = 1'-0"

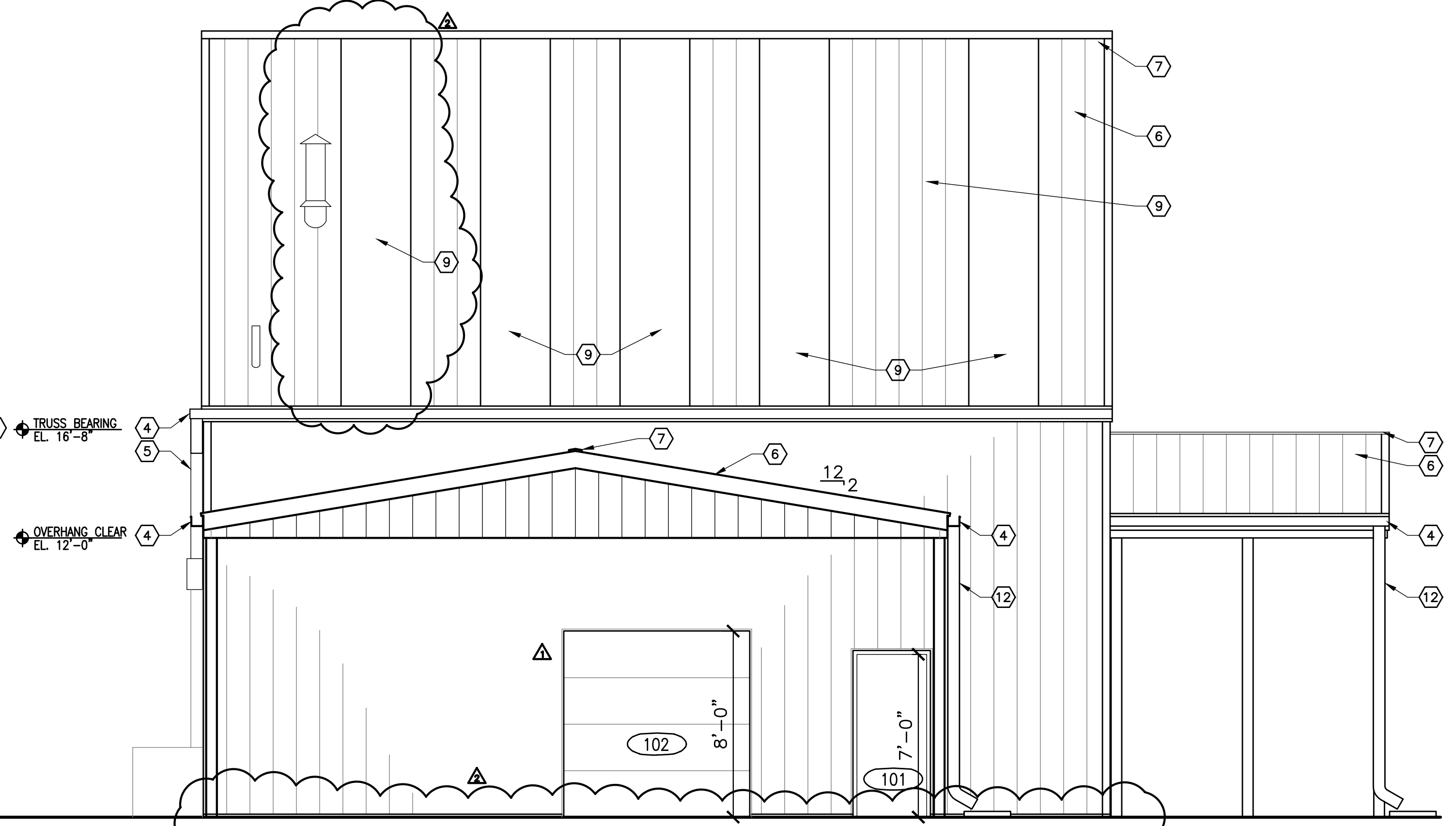
2  
A101



**WEST ELEVATION**

SCALE: 1/4" = 1'-0"

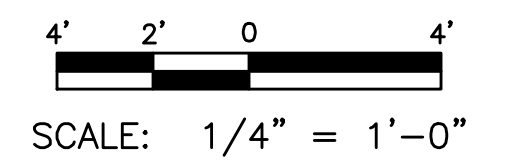
3  
A101



**NORTH ELEVATION**

SCALE: 1/4" = 1'-0"

4  
A101



ATHENS

**OHIO UNIVERSITY  
SOLAR COMPOST EXPANSION 2011**

OHIO

**ARCHITECTURAL  
ELEVATIONS BASE BID**

DRAWN:	CHK'D:	HZS	NO.	REVISION	BY	DATE
DESIGNED: HZS	APPR'D: KMB		▲	ADDENDUM 2	JAH	12/21/11
DATE: DEC 12, 2011			▲	ADDENDUM 3	JAH	12/22/11
SCALE: 1/4" = 1'-0"			▲			
			▲			
			▲			
PROJECT NUMBER			▲			
<b>1121-6004.00</b>			▲			

SHEET 10

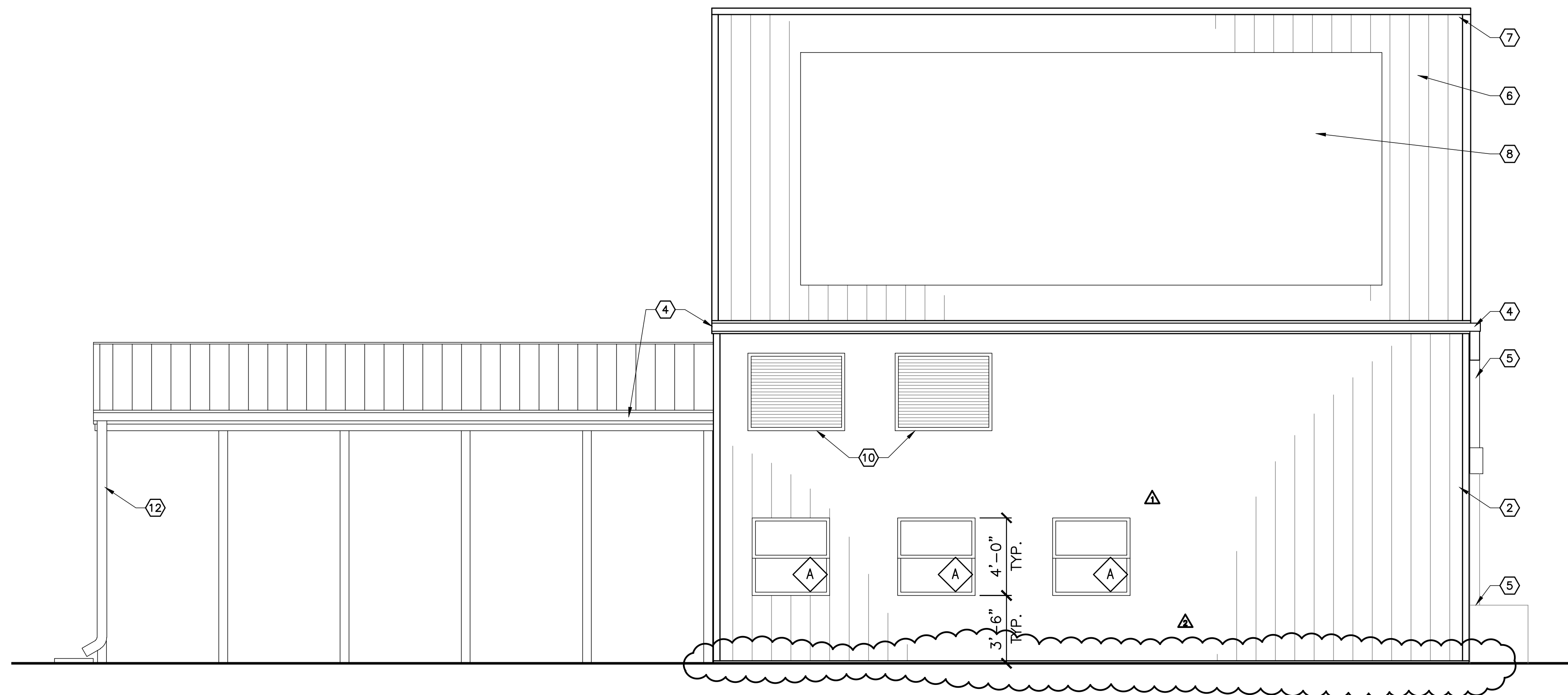
OF 24

DRAWING NUMBER

**A201**

DLZ OHIO, INC.

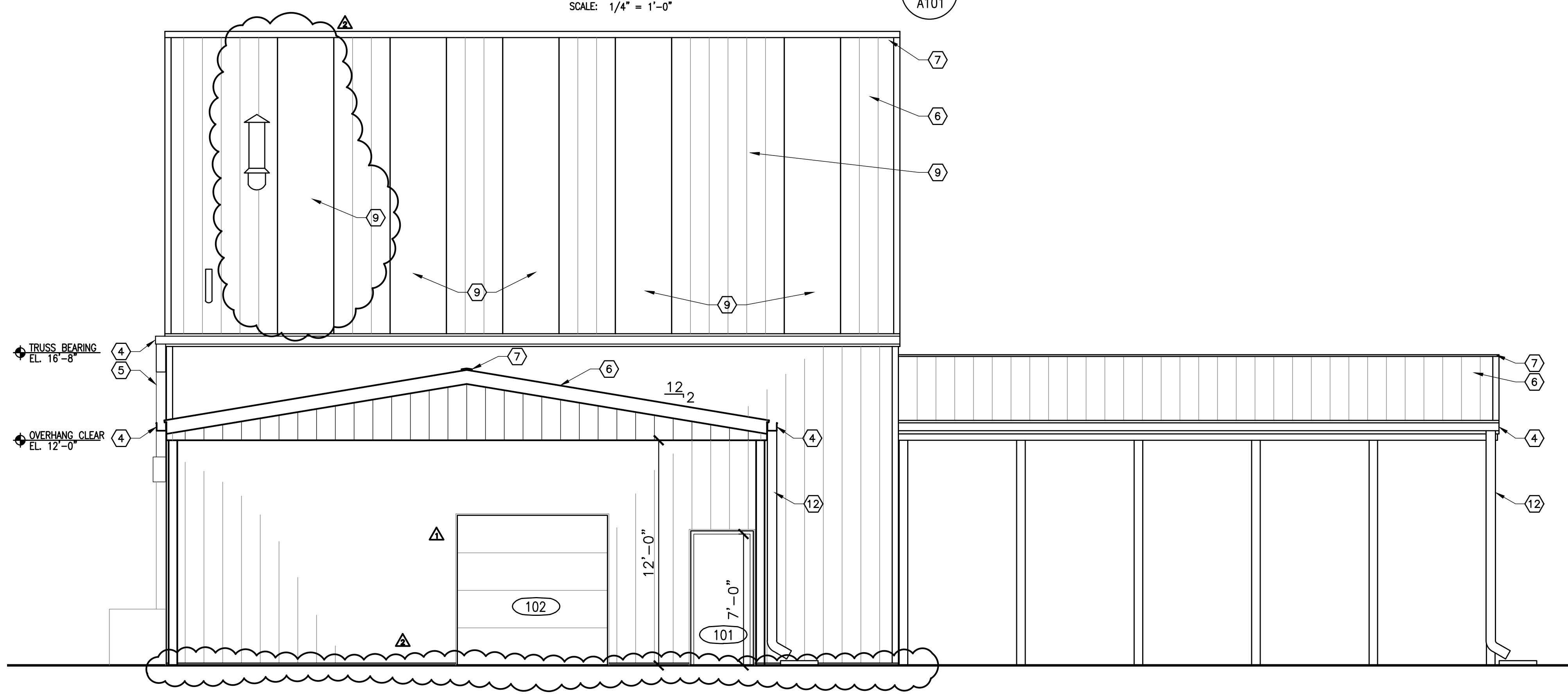
- CODED NOTES: (1)
1. COMPOSTER EQUIPMENT.
  2. EXTERIOR METAL PANEL & TRIM, TYPICAL.
  3. CONCRETE BARRIER.
  4. GUTTER.
  5. DOWNSPOUT. CONNECT TO CISTERN, REFER TO CIVIL.
  6. METAL ROOF PANELS.
  7. RIDGE CAP.
  8. SOLAR PANELS, BY OWNER.
  9. TRANSLUCENT PANELS.
  10. LOUVER. REFER TO MECHANICAL.
  11. OUTLINE OF EXISTING FACILITY.
  12. DOWNSPOUT & SPLASH BLOCK.



**ALTERNATE G2  
SOUTH ELEVATION**

SCALE: 1/4" = 1'-0"

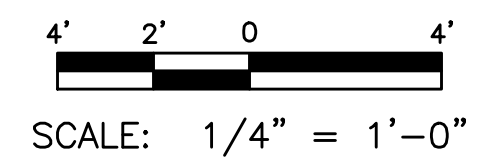
1  
A101



**ALTERNATE G2  
NORTH ELEVATION**

SCALE: 1/4" = 1'-0"

4  
A101



ATHENS

OHIO

**OHIO UNIVERSITY  
SOLAR COMPOST EXPANSION 2011**

**ARCHITECTURAL  
ELEVATIONS, ALTERNATE G2**

DRAWN: LMB	CHK'D: HZS	NO.	REVISION	BY	DATE
DESIGNED: HZS	APPR'D: KMB	1	ADDENDUM 2	JAH	12/21/11
DATE: DEC 12, 2011		2	ADDENDUM 3	JAH	12/22/11
SCALE: 1/4" = 1'-0"					
PROJECT NUMBER					
<b>1121-6004.00</b>					

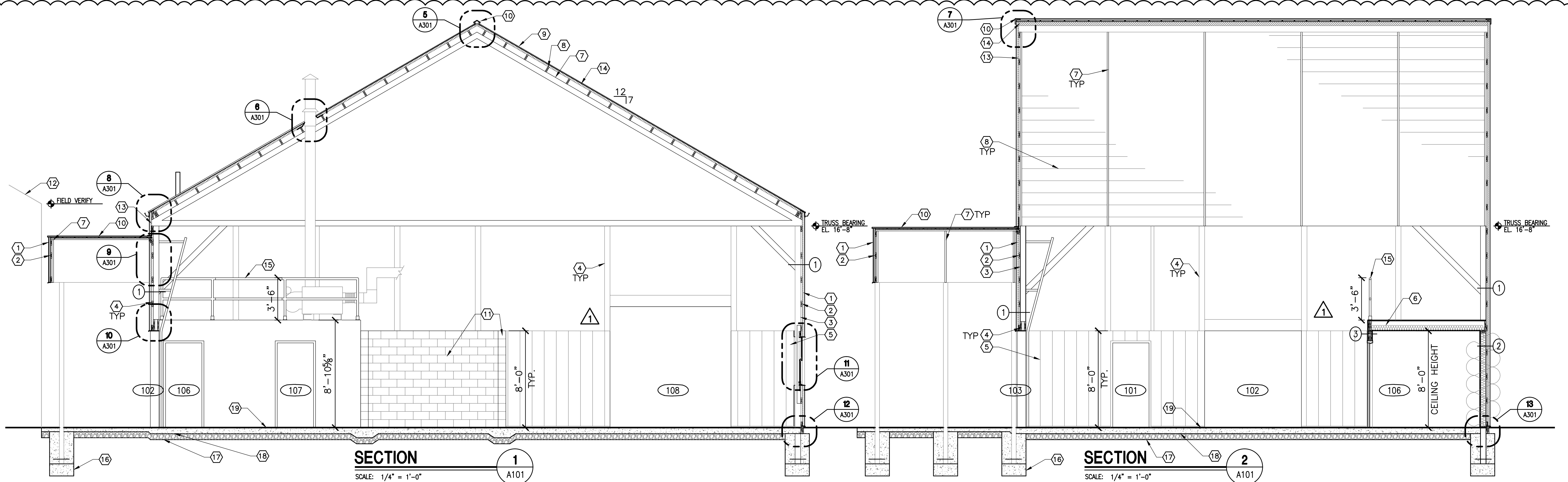
SHEET 11

OF 24

DRAWING NUMBER

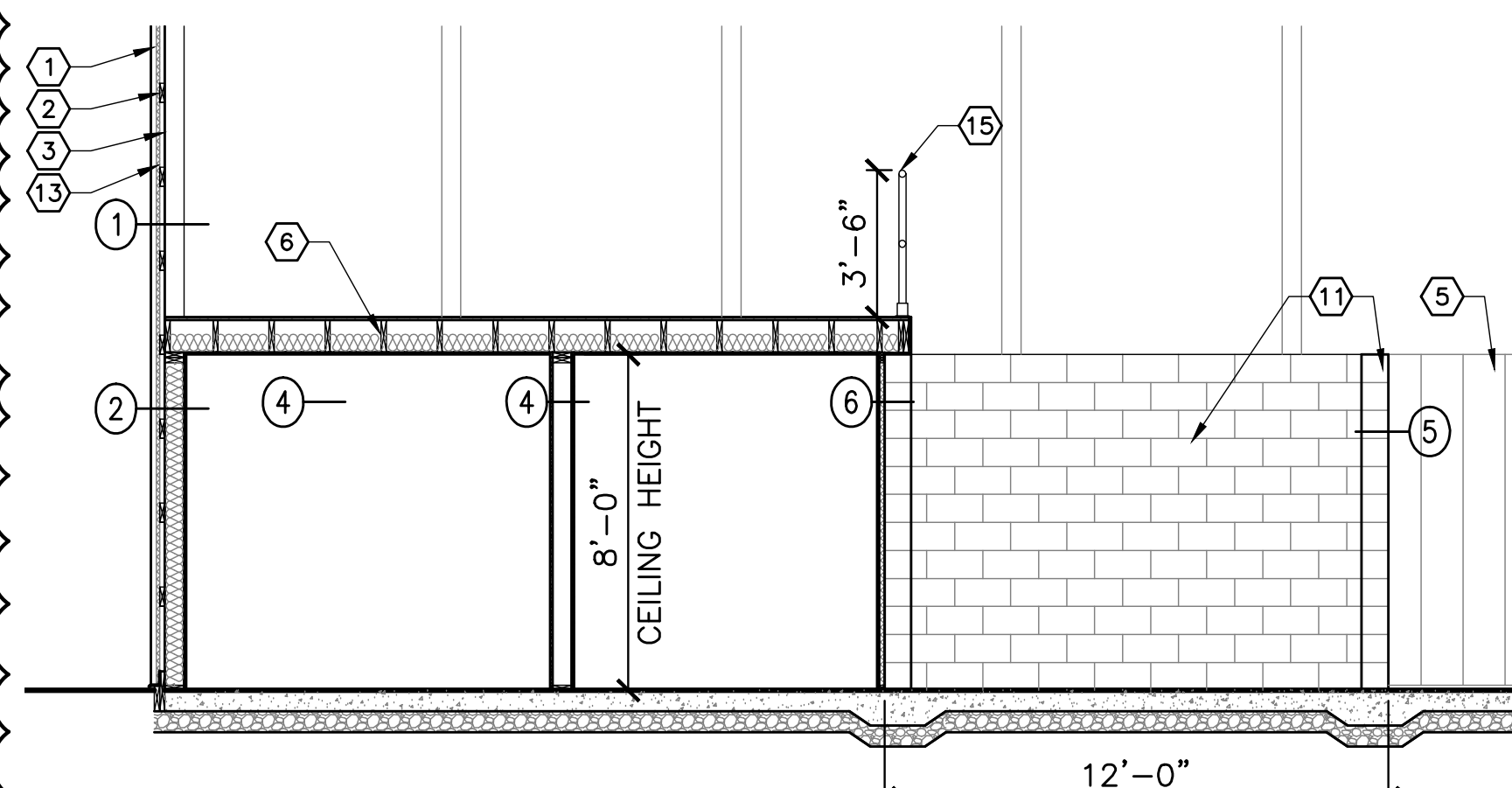
**A202**

DLZ OHIO, INC.

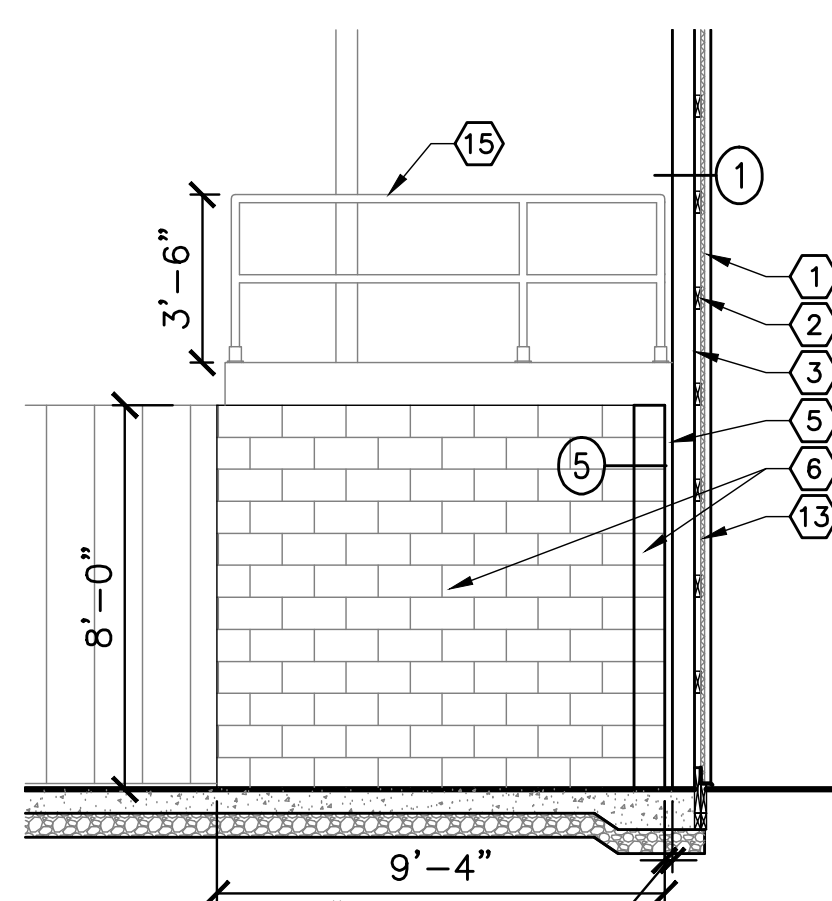


**SECTION 1**  
SCALE: 1/4" = 1'-0"

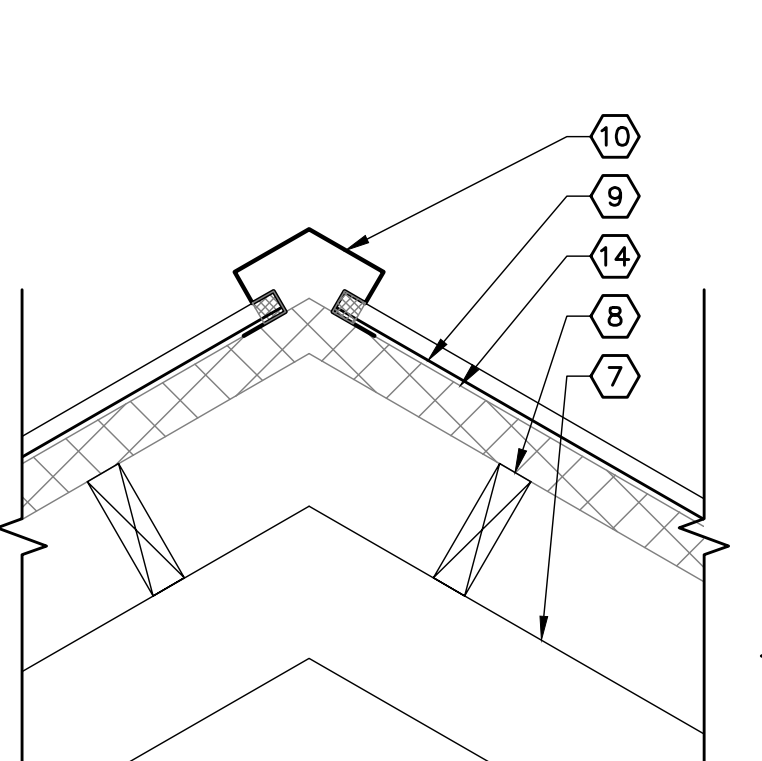
**SECTION 2**  
SCALE: 1/4" = 1'-0"



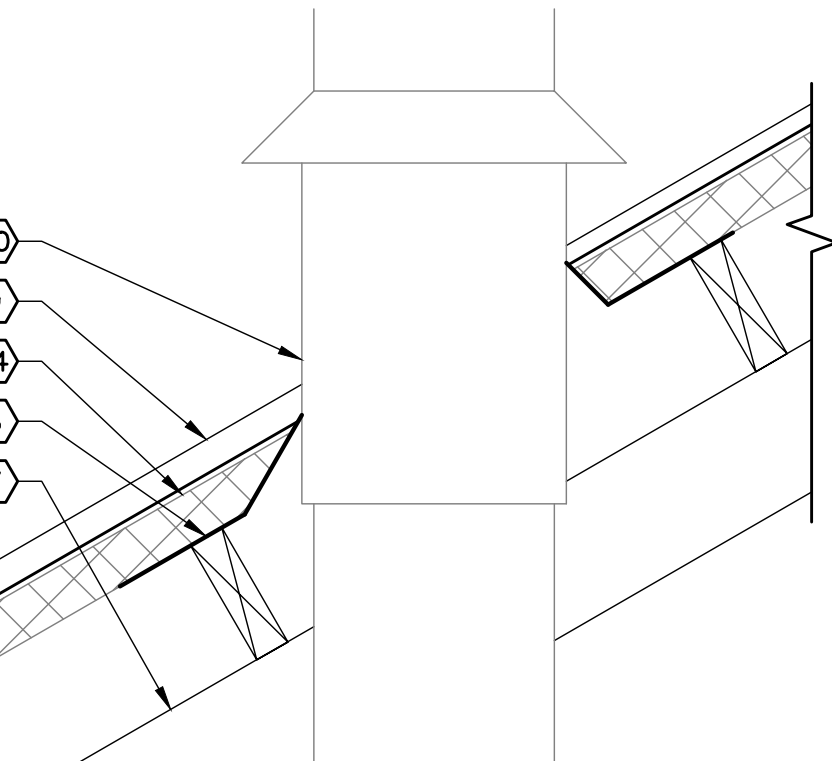
**SECTION 3**  
SCALE: 1/4" = 1'-0"



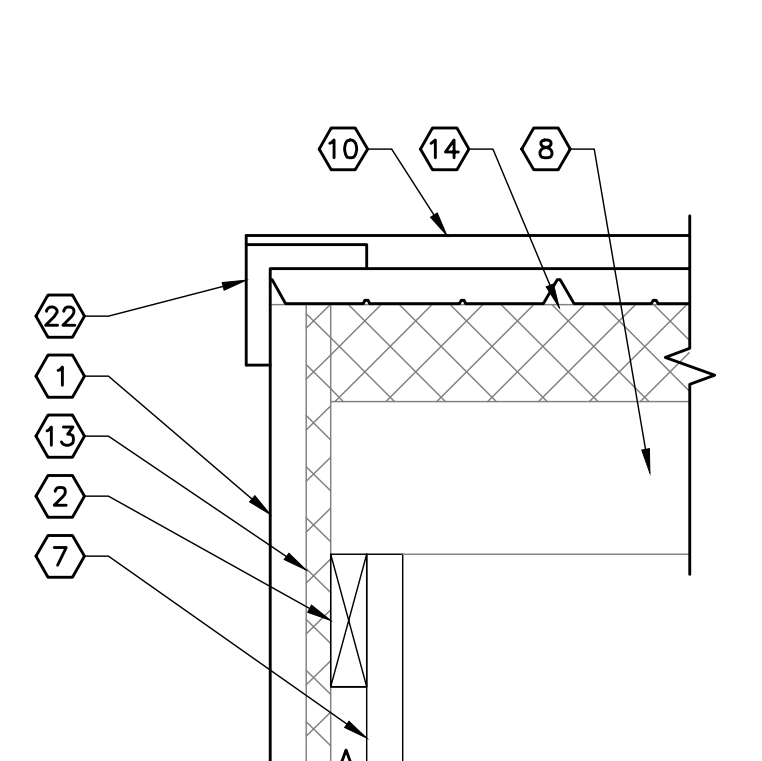
**SECTION 4**  
SCALE: 1/4" = 1'-0"



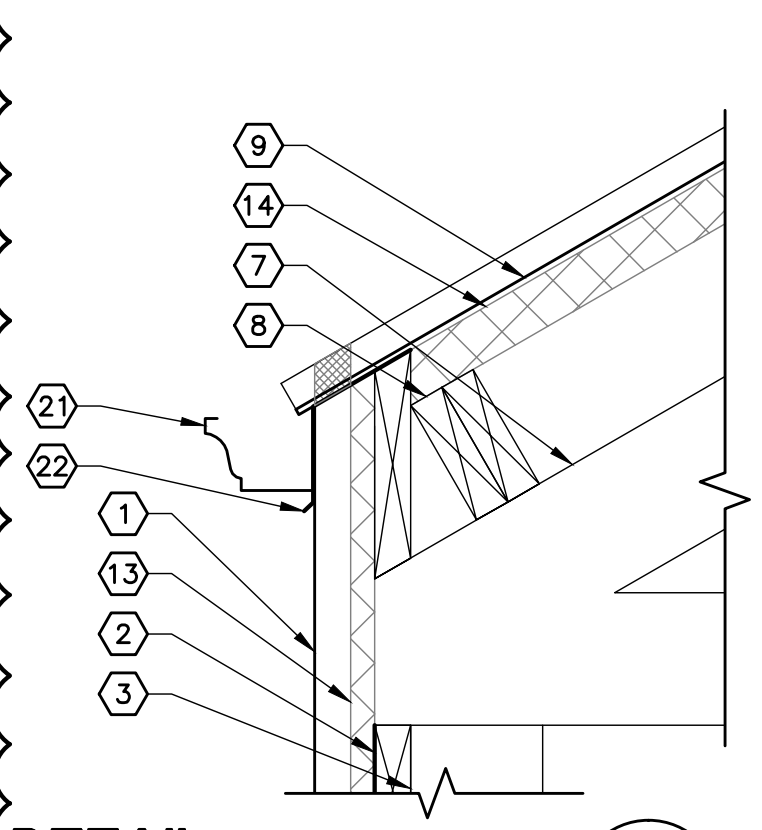
**DETAIL 5**  
SCALE: 1 1/2" = 1'-0"



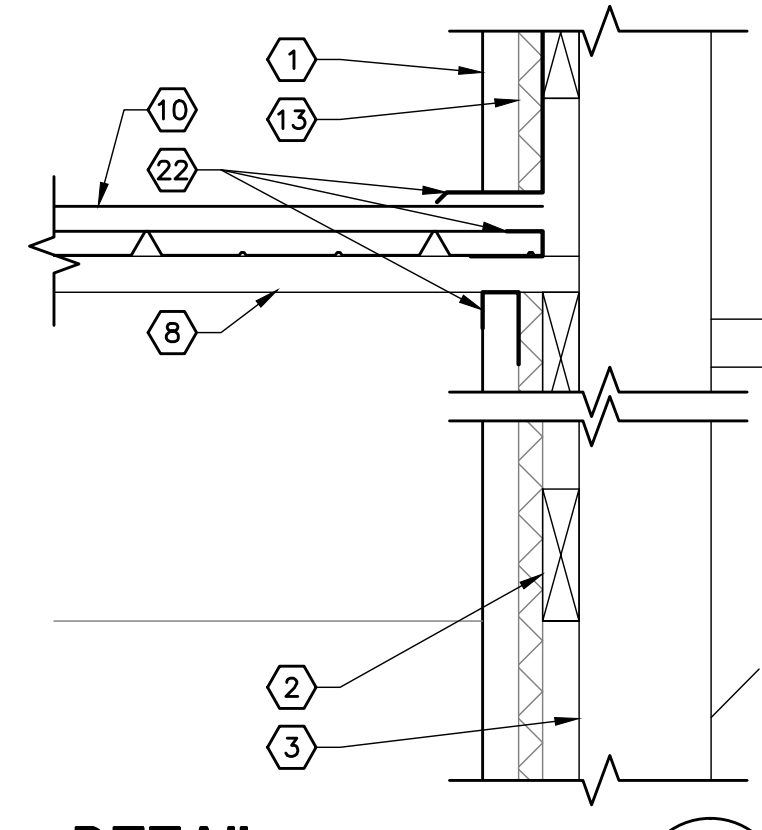
**DETAIL 6**  
SCALE: 1 1/2" = 1'-0"



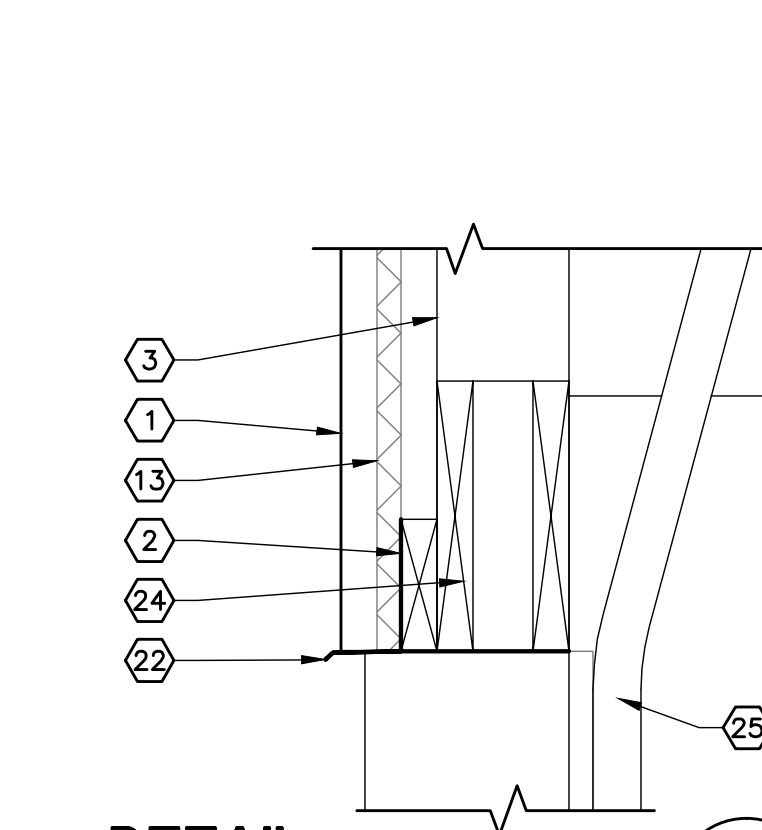
**DETAIL 7**  
SCALE: 1 1/2" = 1'-0"



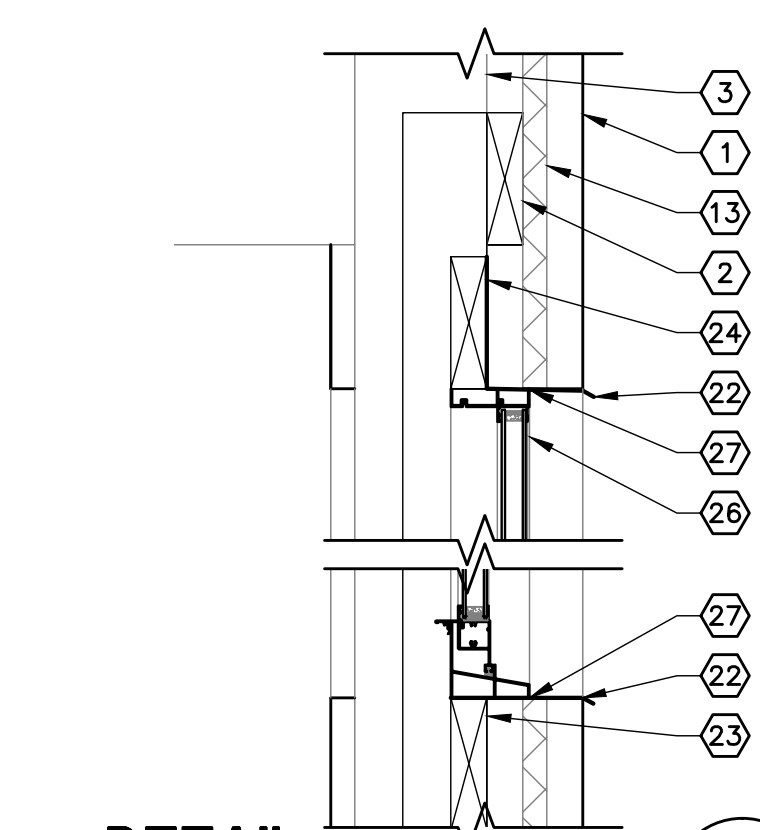
**DETAIL 8**  
SCALE: 1 1/2" = 1'-0"



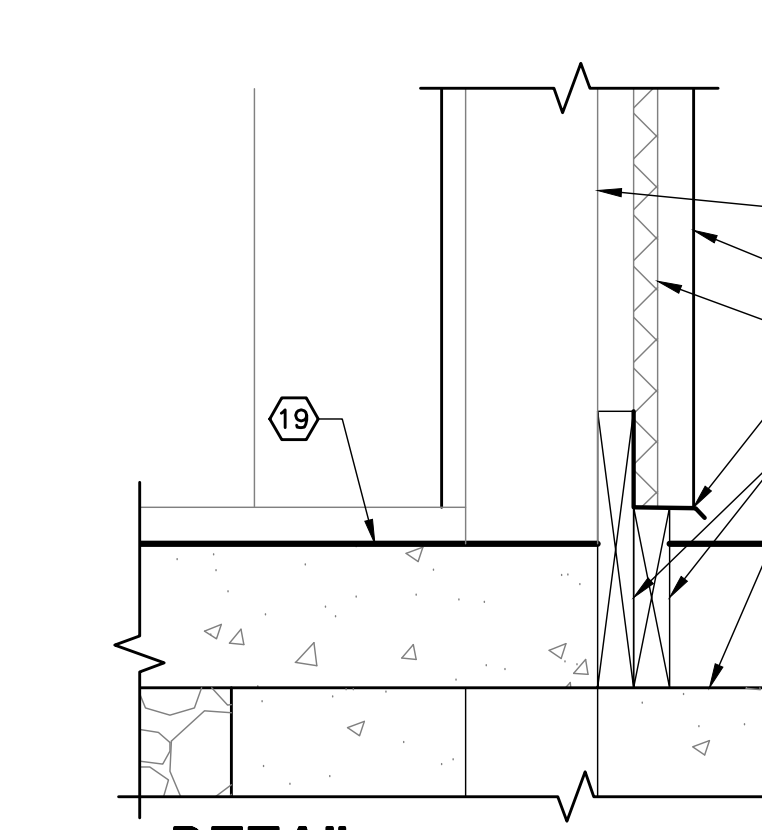
**DETAIL 9**  
SCALE: 1 1/2" = 1'-0"



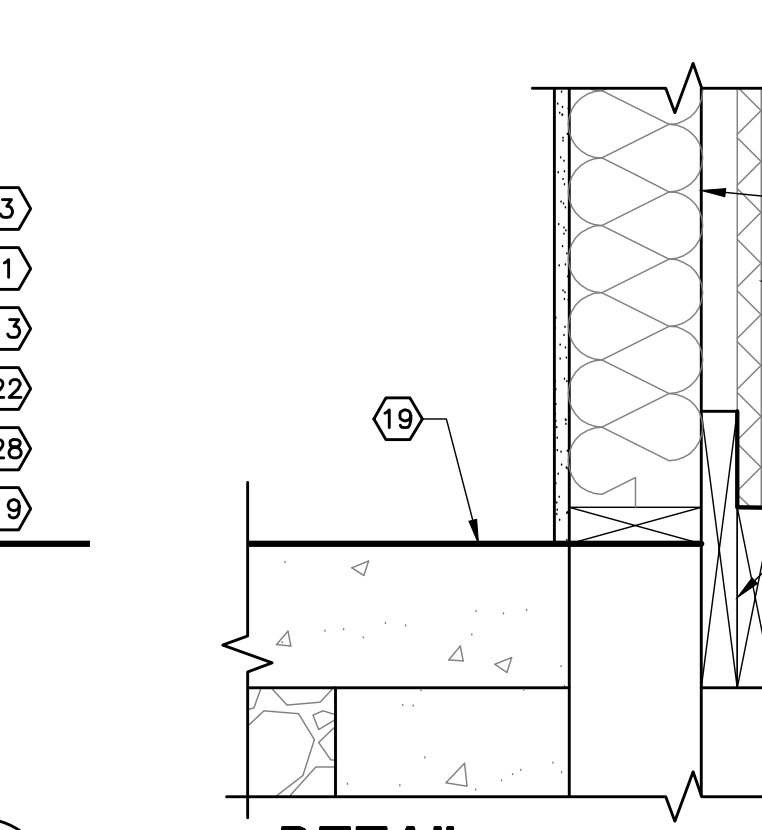
**DETAIL 10**  
SCALE: 1 1/2" = 1'-0"



**DETAIL 11**  
SCALE: 1 1/2" = 1'-0"

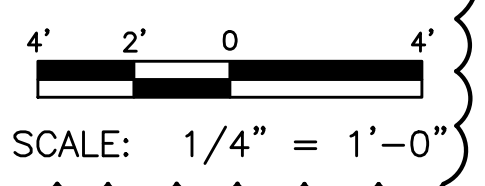


**DETAIL 12**  
SCALE: 1 1/2" = 1'-0"



**DETAIL 13**  
SCALE: 1 1/2" = 1'-0"

- CODED NOTES:**
1. EXTERIOR METAL PANEL, TYPICAL.
  2. GIRT, TYPICAL.
  3. POST, TYPICAL.
  4. FRAMING, TYPICAL.
  5. INTERIOR METAL LINER PANEL TO 8'-0" A.F.F., TYP.
  6. 5/8" GYPSUM BOARD CEILING, 2x10 JOIST, 3 1/2" FIBERGLASS BATT INSULATION, 3/4" PRESSURE-TREATED PLYWOOD DECKING, SHEET METAL.
  7. TRUSS, TYPICAL.
  8. PURLIN, TYPICAL.
  9. METAL ROOF PANEL W/CLOSURE STRIP.
  10. RIDGE CAP W/CLOSURE STRIP.
  11. 8" INTERIOR MASONRY WALL W/#4@24" VERT. LAP WITH #4 DOWELS @ 24" EXTENDED INTO THICKENED SLAB W/90° STD. HOOK. 8" DEEP BOND BEAM @ TOP W/2-#4.
  12. OUTLINE OF EXISTING FACILITY.
  13. 1" INSULATION.
  14. 2" INSULATION.
  15. 1 1/2" Ø STEEL SAFETY GUARD WITH FLANGES SCREWED INTO WOOD CURB. CENTER SECTION TO BE REMOVABLE (PINS OR COTTER PIN/FASTENERS) TO ALLOW FOR MAINTENANCE ACCESS.
  16. CONCRETE FOUNDATION BY BUILDING MANUFACTURER.
  17. CAPILLARY WATER BARRIER.
  18. VAPOR RETARDER.
  19. CONCRETE SLAB SEE STRUCTURAL PLAN.
  20. FLUE W/FLASHING BOOT. REFER TO MECHANICAL.
  21. GUTTER.
  22. TRIM/FLASHING.
  23. SILL.
  24. HEADER.
  25. OVERHEAD DOOR & TRACK.
  26. WINDOW.
  27. SEALANT.
  28. PRESSURE-TREATED SPLASH PLANK.



ATHENS OHIO

**OHIO UNIVERSITY  
SOLAR COMPOST EXPANSION 2011**

**ARCHITECTURAL  
SECTIONS**

NO.	REVISION	BY	DATE
1	ADDENDUM 2	JAH	12/21/11
2	ADDENDUM 3	LMB	12/23/11

DRAWN: LMB    CHK'D: HZS  
 DESIGNED: HZS    APPR'D: KMB  
 DATE: DEC 12, 2011  
 SCALE: 1/4" = 1'-0"  
 PROJECT NUMBER  
**1121-6004.00**

SHEET **12**  
OF **24**  
DRAWING NUMBER  
**A301**

DLZ OHIO, INC.